

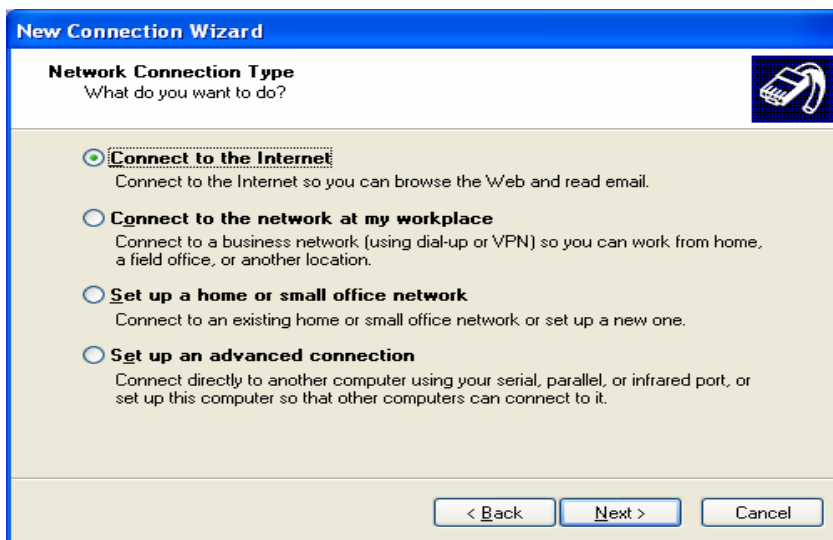
BAB X AKSES DATA VIA PACKET DATA NETWORK (PDN)

PETUNJUK PENGGUNAAN PDN (Packet Data Network)

- I. Install cable data (setiap merek cable data memiliki setting yang berbeda)
- II. Install modem terminal (setiap merek terminal memiliki cara yang berbeda)
- III. Membuat new connection:
 1. Klik Start → Setting → Control Panel → Network and Internet Connection → Network Connection → Create a New Connection ,Lalu tekanlah tombol **Next**



2. Pilih pilihan **Connect to the Internet**, lalu tekan tombol **Next**



3. Pilih pilihan **Set up my connection manually**, lalu tekan tombol **Next**

New Connection Wizard

Getting Ready
The wizard is preparing to set up your Internet connection.

How do you want to connect to the Internet?

- Choose from a list of Internet service providers (ISPs)
- Set up my connection manually**
For a dial-up connection, you will need your account name, password, and a phone number for your ISP. For a broadband account, you won't need a phone number.
- Use the CD I got from an ISP

< Back Next > Cancel

4. Pilih pilihan **Connect using a dial-up modem**, lalu tekan tombol **Next**

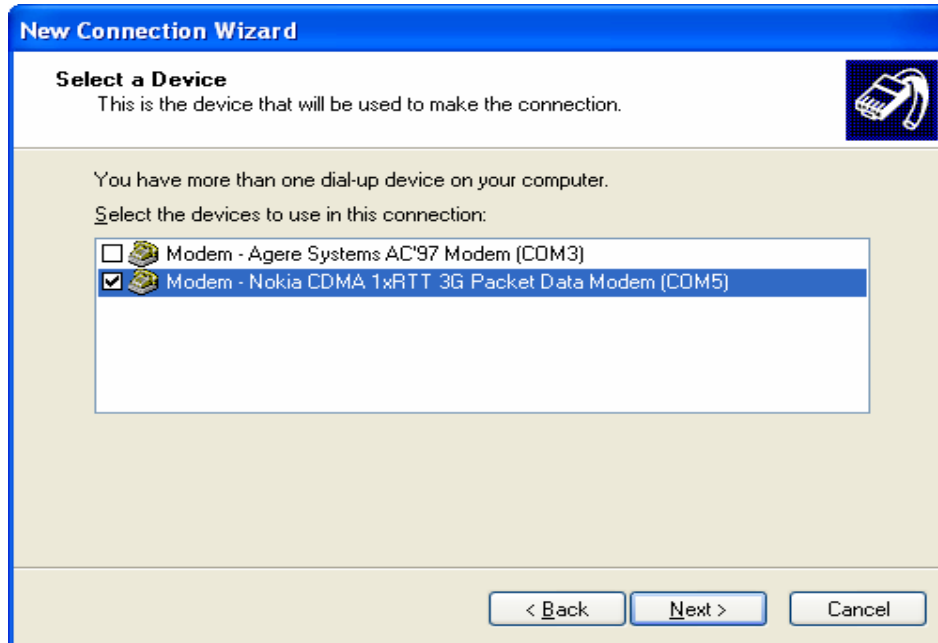
New Connection Wizard

Internet Connection
How do you want to connect to the Internet?

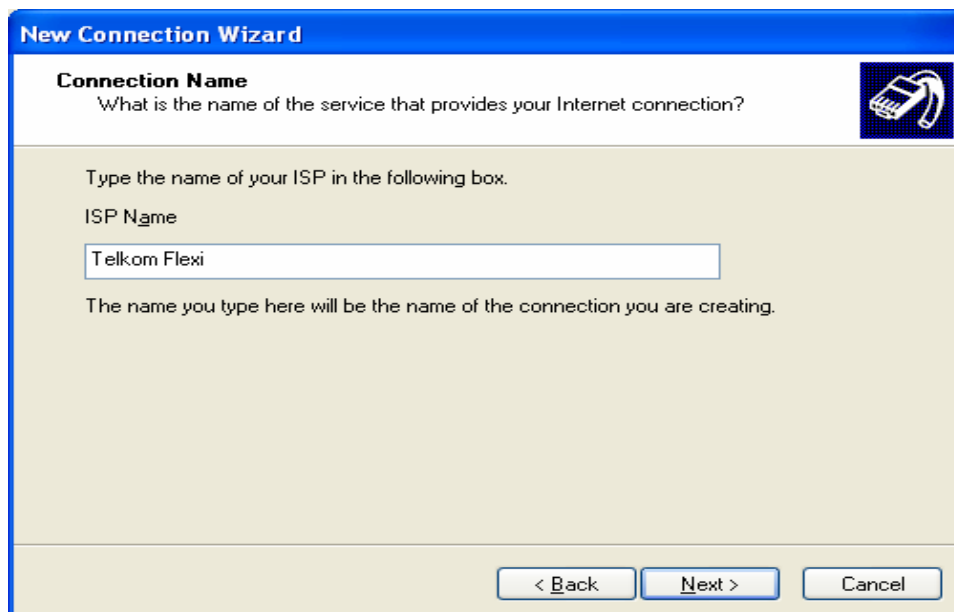
- Connect using a dial-up modem**
This type of connection uses a modem and a regular or ISDN phone line.
- Connect using a broadband connection that requires a user name and password**
This is a high-speed connection using either a DSL or cable modem. Your ISP may refer to this type of connection as PPPoE.
- Connect using a broadband connection that is always on**
This is a high-speed connection using either a cable modem, DSL or LAN connection. It is always active, and doesn't require you to sign in.

< Back Next > Cancel

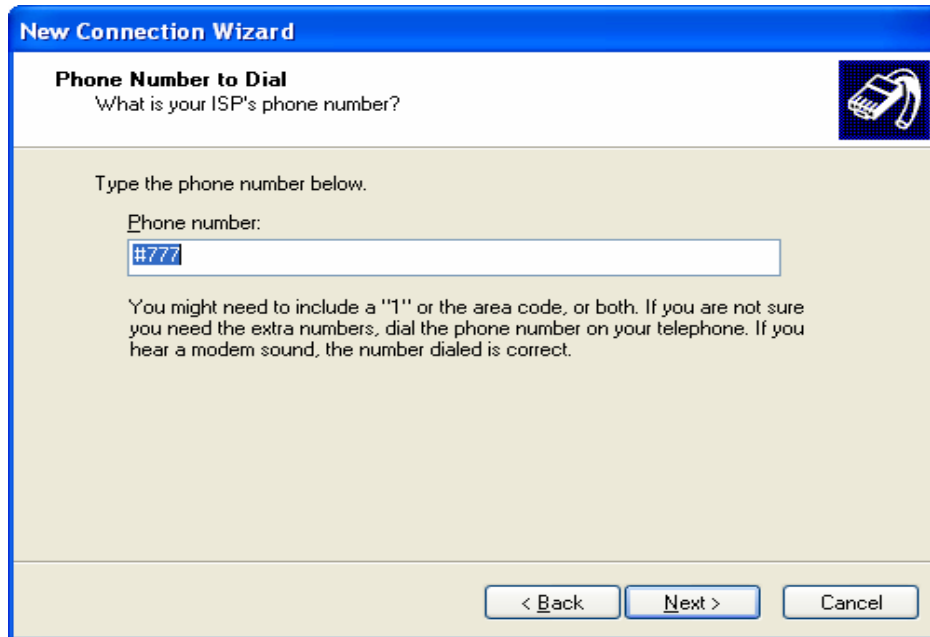
5. Akan terdapat pilihan modem. Pilihan modem adalah : **Modem – Standar19200 bps Modem (COM1)**, lalu tekan tombol **Next**.



6. Masukkan Nama ISP anda "**Telkom Flexi**", lalu tekan tombol **Next**.



7. Masukkan nomer Telepon “#777”, lalu tekan tombol **Next**.



The screenshot shows a Windows-style dialog box titled "New Connection Wizard". The main heading is "Phone Number to Dial" with a sub-heading "What is your ISP's phone number?". There is a telephone icon in the top right corner. The instruction says "Type the phone number below." Below this is a text input field labeled "Phone number:" containing the text "#777". A note below the field reads: "You might need to include a '1' or the area code, or both. If you are not sure you need the extra numbers, dial the phone number on your telephone. If you hear a modem sound, the number dialed is correct." At the bottom, there are three buttons: "< Back", "Next >", and "Cancel".

8. Isi **User Name**, **Password**, dan **Confirm Password**, lalu tekan tombol **Next**.



The screenshot shows a Windows-style dialog box titled "New Connection Wizard". The main heading is "Internet Account Information" with a sub-heading "You will need an account name and password to sign in to your Internet account." There is a telephone icon in the top right corner. The instruction says "Type an ISP account name and password, then write down this information and store it in a safe place. (If you have forgotten an existing account name or password, contact your ISP.)" Below this are three text input fields: "User name:", "Password:", and "Confirm password:". There are three checked checkboxes: "Use this account name and password when anyone connects to the Internet from this computer", "Make this the default Internet connection", and "Turn on Internet Connection Firewall for this connection". At the bottom, there are three buttons: "< Back", "Next >", and "Cancel".

User name : Telkomnet@Flexi
Password : telkom
Confirm Password : telkom

9. Klik kotak “Add a shortcut to this connectin to my desktop”, lalu tekan tombol **Finish**.

