

## **Cara Mengaktifkan Internet Dengan CDMA SanexTel di Windows XP**

Handheld **CDMA SanexTel** memiliki kemampuan untuk mengakses **internet** dengan kecepatan maksimum **115.200 bps**.

**Alat-alat yang dibutuhkan untuk fitur ini adalah:**

- Handheld **CDMA SanexTel SC-9530, SC-9550, SC-7070 , SC-7080, SC-9889** yang telah diaktifkan akses internetnya.
- Personal Computer(PC) atau Laptop dengan sambungan serial.
- Data Service Cable untuk menghubungkan handheld dengan komputer.

### **Setting handheld SC-9889 1900 MHz 2000 1X**

- Sewaktu handheld dalam keadaan siaga, tekan \*2580# + “END”, menu Port Map akan ditampilkan.
- Pilih **Portmap Diag → NULL DEV → OK.**
- Pilih **Portmap Data → UART1 → OK.**

### **Setting handheld SC-9550 800 Mhz 2000 1X**

- Tekan “**Menu**” + “**5**” + “**8**”
- Pilih “**Data Service**”
- Pilih “**Service Type**” dan pilih “**Packet**”

### **Setting handheld SC-9530 PCS 1900 Mhz IS-95**

- Tekan “**Menu**” + “**8**” + “**3**”
- Pilih “**Data Service**”
- Pilih “**Service Type**” dan pilih “**Packet**”

- **PASTIKAN BAHWA S/W VERSION ( MENU “8”+ “3”) ADALAH VERSI 19L.06.15**

#### **Setting handheld SC-9530 800 Mhz IS-95**

- *Tekan “Menu” + “8” + “3”*
- **Pilih “Data Service”**
- **Pilih “Service Type” dan pilih “Packet”**
- **PASTIKAN BAHWA S/W VERSION ( MENU “8”+ “3”) ADALAH VERSI 18.00.15**

#### **Setting handheld SC-7070&7080 1900&800 Mhz 2000-1X**

- **Tekan “Menu” + “4” + “8”**
- **Pilih “Data Service”**
- **Pilih “Service Type” dan pilih “Packet”**

Sambungkan handheld dan computer dengan Data Service Cable.

## Instalasi Kabel Data USB Pada Windows XP

- Pasang data Kabel USB ke PC atau Laptop yang mempunyai USB port, akan muncul jendela “**Found New Hardware Wizard**”, lalu pilih “**from a list or specific location (Advanced)**”, dan Tekan “**Next**”.

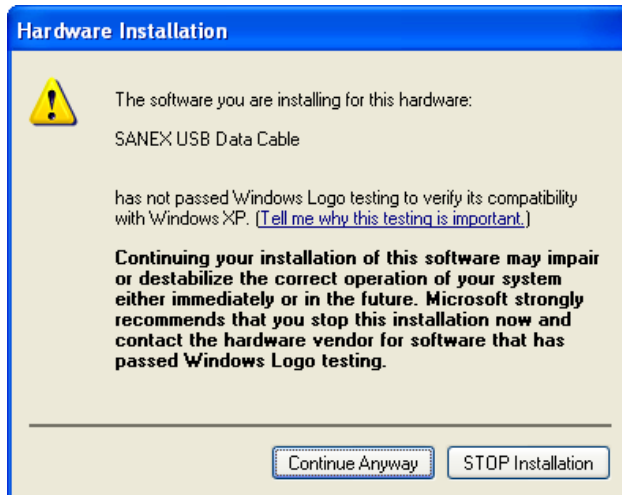


- Pilih **Specific location** dimana driver tersebut di simpan. Misalnya : **D:\Win2000XP**

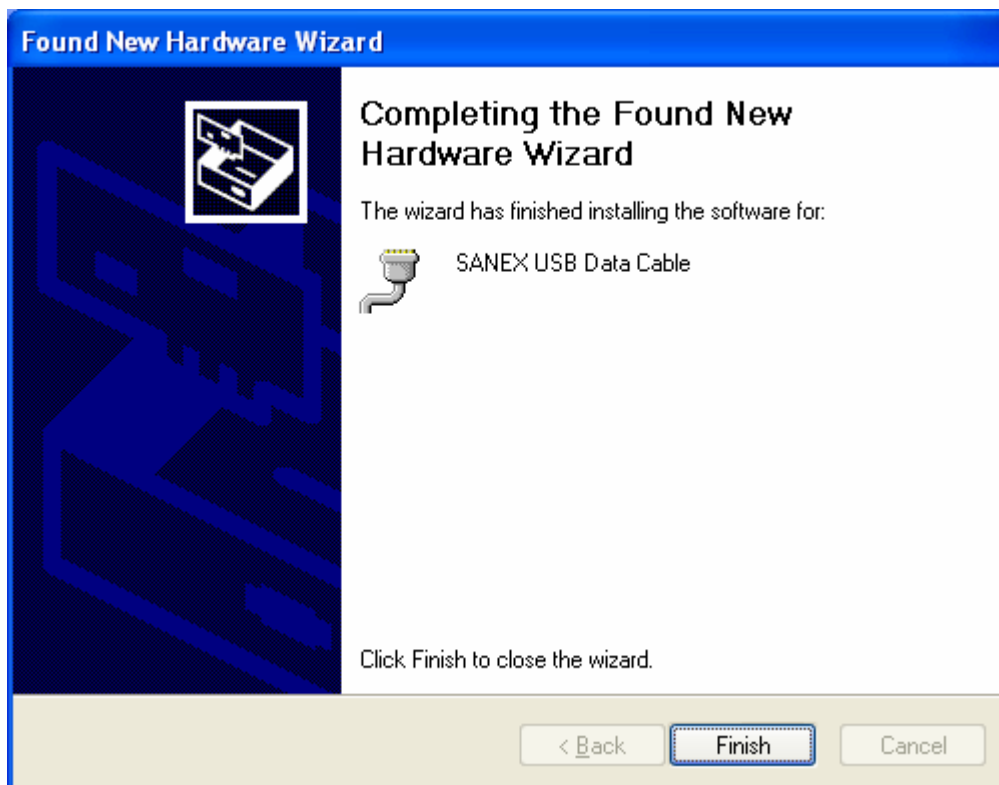


Get the latest Flexi updates, click [www.telkomflexi.com](http://www.telkomflexi.com) !

- Pada saat transfer data, akan keluar jendela seperti di bawah ini, pilih “**Continue Anyway**”.

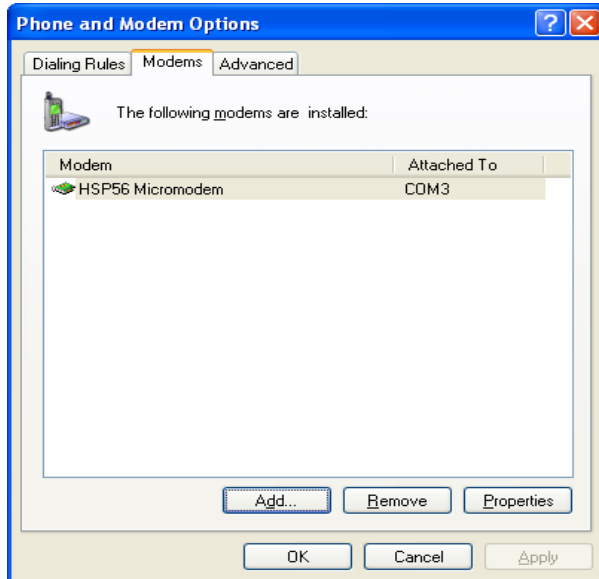


- Pilih “**Finish**”. Berarti anda sudah selesai menginstall driver “**Sanex USB data cable**”.



## Pengaturan Modem

- Tekan tombol **Start** → **Setting** → **Control Panel** → **Network and Internet Connection** → **Phone & Modem Options** → **Modems**

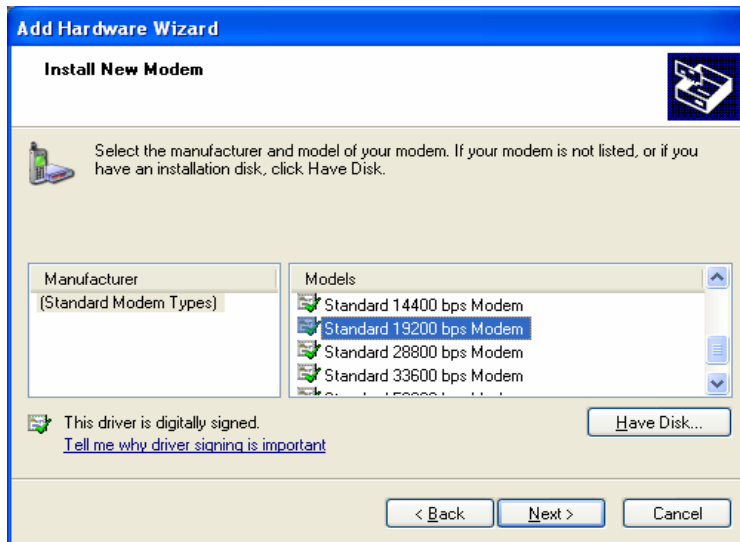


- Tekan tombol **“Add”**, maka akan keluar jendela **“Instal New Modem”**. Lalu klik kotak **“Don’t detect my modem; I will select it from a list”**, lalu tekan **“Next”**

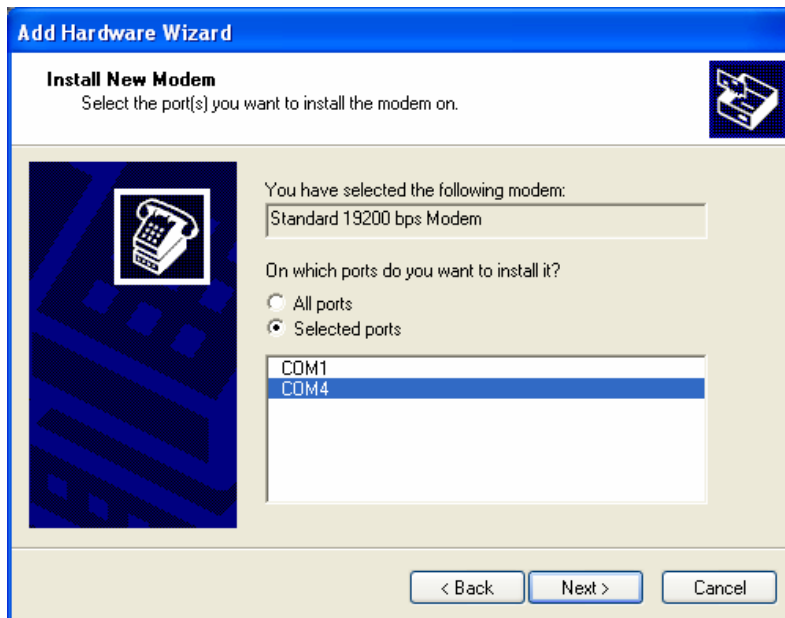


Get the latest Flexi updates, click [www.telkomflexi.com](http://www.telkomflexi.com) !

- Pada jendela ini, pilih manufactures sebagai “( **Standard Modem Types** )” dan Models sebagai “**Standard 19200 bps Modem**”. Lalu tekan **Next**



- Jika anda menghubungkan handheld anda ke (**Communications Port**) **COM 4** dari computer anda, pilihlah “**COM 4**”, tergantung dari **COM** mana yang anda gunakan. Lalu tekan “**Next**”

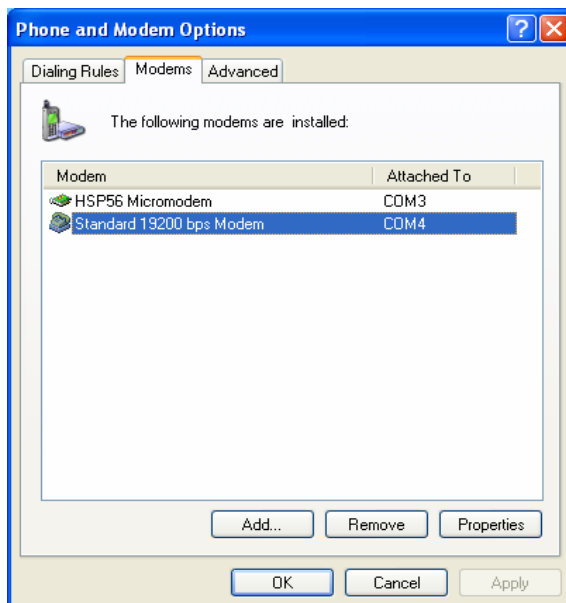


Get the latest Flexi updates, click [www.telkomflexi.com](http://www.telkomflexi.com) !

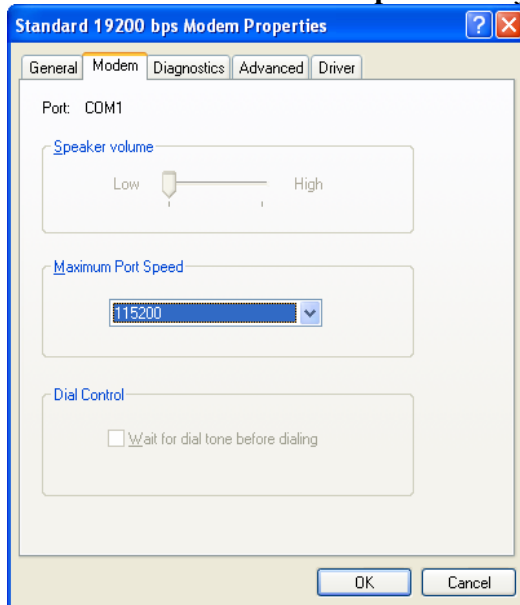
- Setelah menunggu beberapa saat akan muncul jendela konfirmasi bahwa modem telah terhubung dengan sukses. Tekanlah **“Finish”** untuk melanjutkan ke langkah berikutnya.



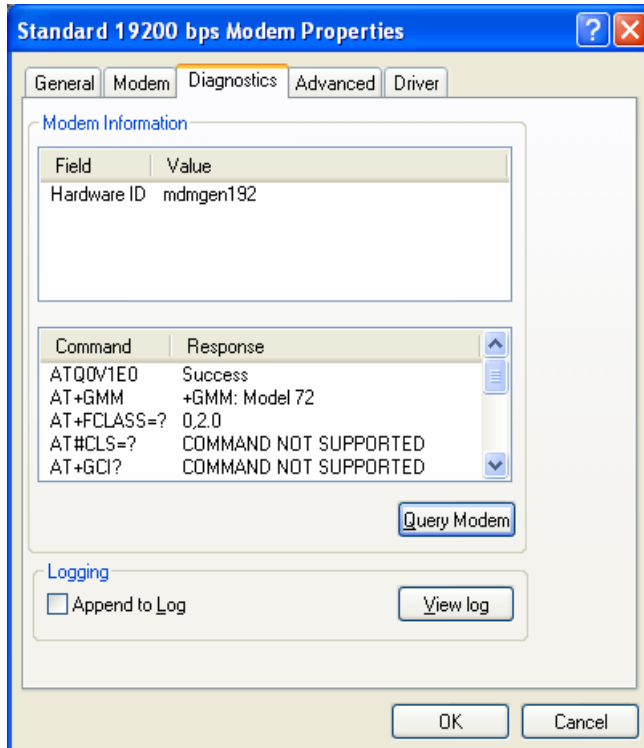
- Anda akan kembali ke jendela **“Phone and Modem Options”**. Pilihlah **“Standard 19200 bps Modem”** lalu klik **“Properties”**. Setelah itu pilih menu tab **“Modem”**



- Pilih “**Maximum Port Speed**” menjadi “**115200 bps**” dan tekan “**OK**”



- Kembali lagi ke jendela “**Phone and Modem Options**”. Klik “**Properties**”. Setelah itu pilih menu pop “**Diagnostics**”. Lalu pilih “**Query Modem**”.

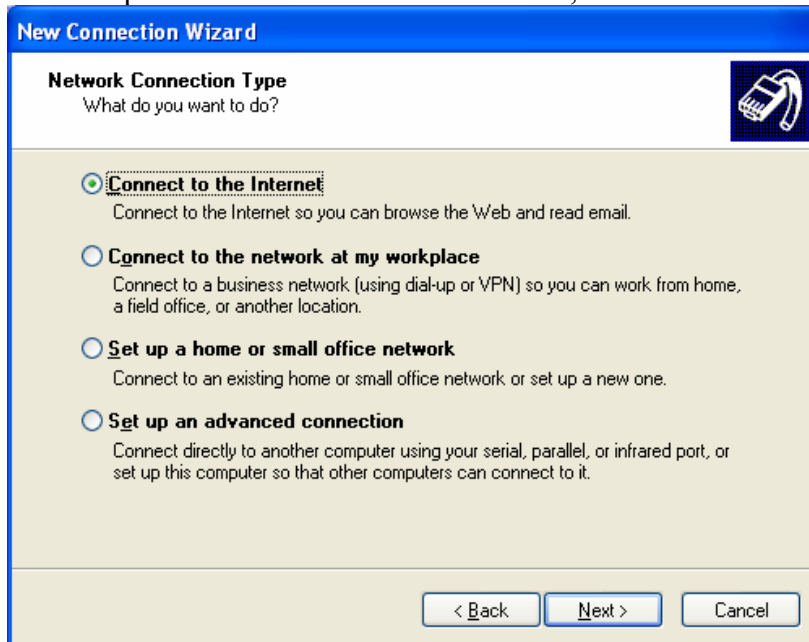


## Cara Membuat Koneksi Baru.

- **Start → Setting → Control Panel → Network and Internet Connection → Network Connection → Create a New Connection.** Lalu tekanlah tombol Next.

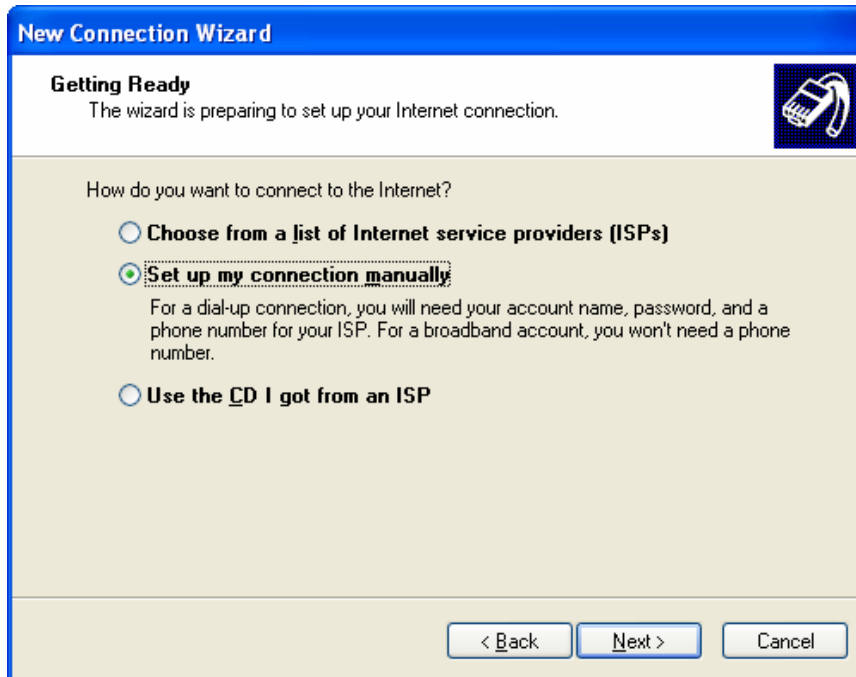


- Pilih pilihan **“Connect to the Internet”**, lalu tekan tombol **“Next”**



Get the latest Flexi updates, click [www.telkomflexi.com](http://www.telkomflexi.com) !

- Pilih pilihan “**Set up my connection manually**”, lalu tekan tombol “**Next**”



**New Connection Wizard**

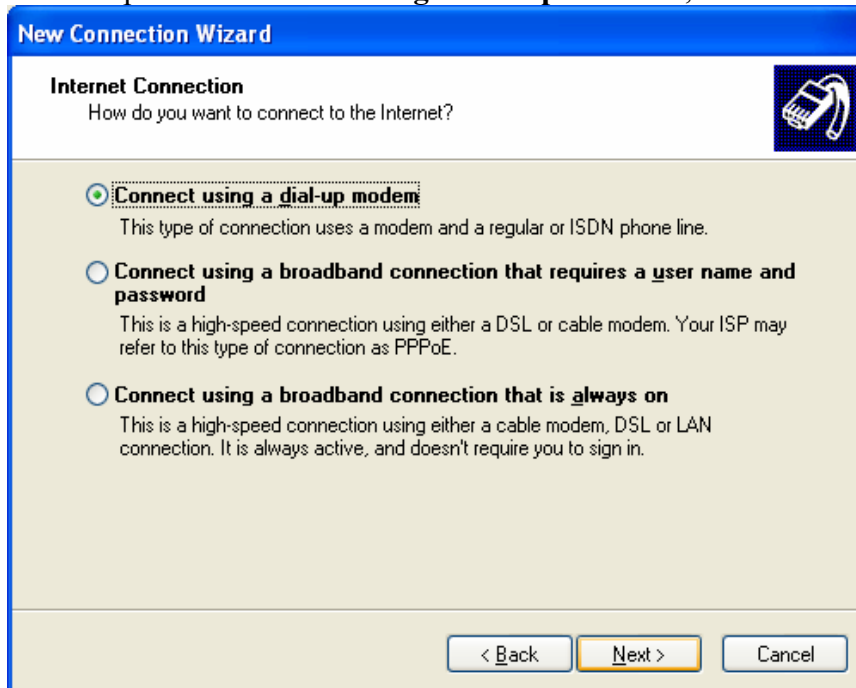
**Getting Ready**  
The wizard is preparing to set up your Internet connection.

How do you want to connect to the Internet?

- Choose from a list of Internet service providers (ISPs)**
- Set up my connection manually**  
For a dial-up connection, you will need your account name, password, and a phone number for your ISP. For a broadband account, you won't need a phone number.
- Use the CD I got from an ISP**

< Back   Next >   Cancel

- Pilih pilihan “**Connect using a dial-up modem**”, lalu tekan tombol “**Next**”



**New Connection Wizard**

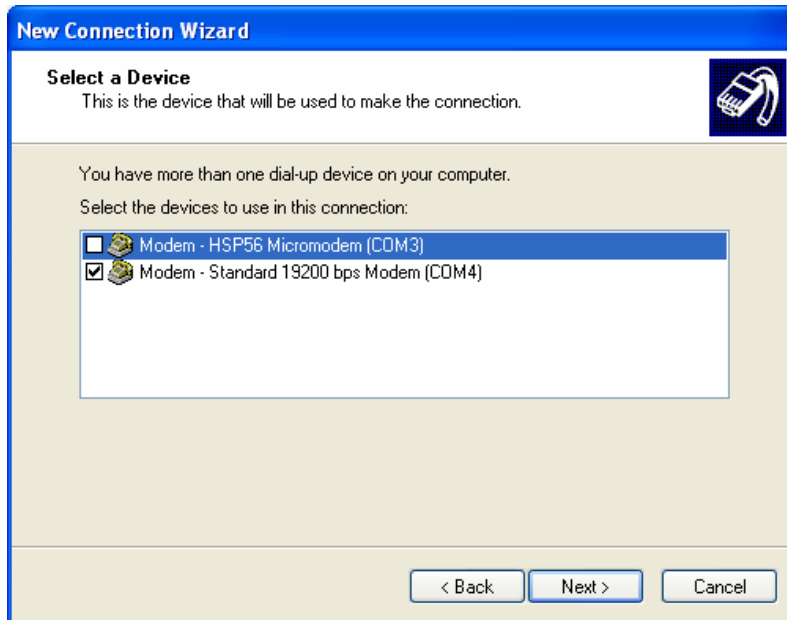
**Internet Connection**  
How do you want to connect to the Internet?

- Connect using a dial-up modem**  
This type of connection uses a modem and a regular or ISDN phone line.
- Connect using a broadband connection that requires a user name and password**  
This is a high-speed connection using either a DSL or cable modem. Your ISP may refer to this type of connection as PPPoE.
- Connect using a broadband connection that is always on**  
This is a high-speed connection using either a cable modem, DSL or LAN connection. It is always active, and doesn't require you to sign in.

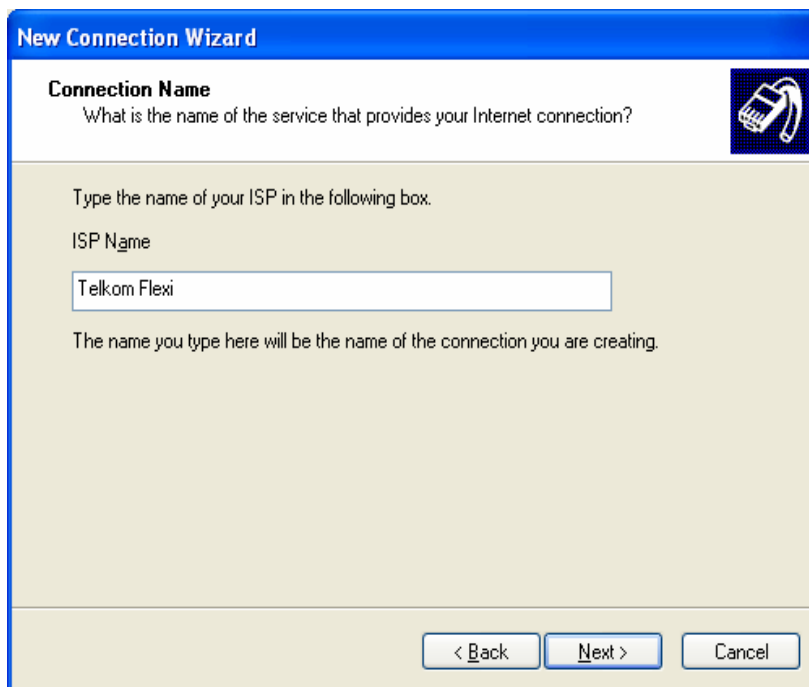
< Back   Next >   Cancel

Get the latest Flexi updates, click [www.telkomflexi.com](http://www.telkomflexi.com) !

- Akan terdapat pilihan modem. Anda harus memilih “**Modem – Standard 19200 bps Modem ( COM4 )**”, lalu tekan tombol “**Next**”.

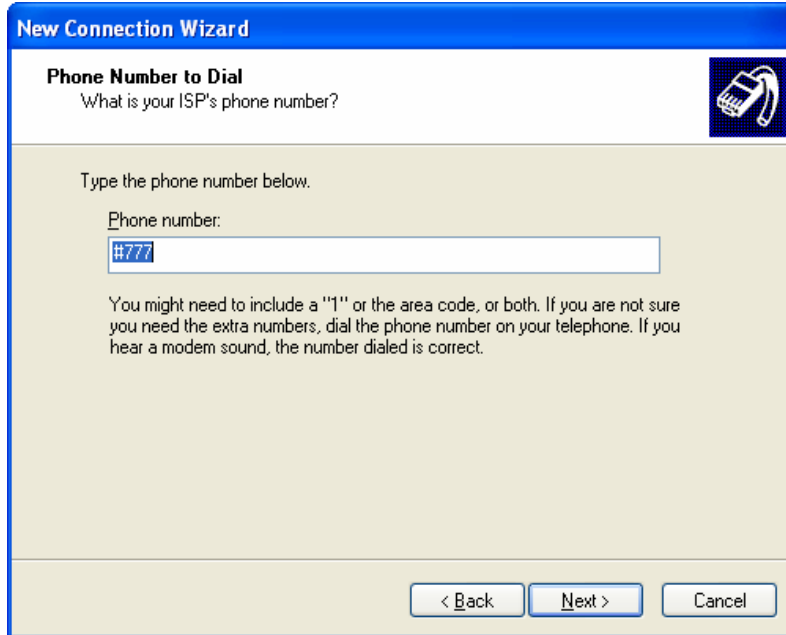


- Masukkan Nama ISP yaitu : **Telkom Flexi** lalu tekan tombol **Next**



- Masukkan nomor Telepon ISP anda dengan “**#777**”, lalu tekan tombol “**Next**”.

Get the latest Flexi updates, click [www.telkomflexi.com](http://www.telkomflexi.com) !



**New Connection Wizard**

**Phone Number to Dial**  
What is your ISP's phone number?

Type the phone number below.

Phone number:

You might need to include a "1" or the area code, or both. If you are not sure you need the extra numbers, dial the phone number on your telephone. If you hear a modem sound, the number dialed is correct.

< Back   Next >   Cancel

- Jangan isi “User Name, Password”, dan “Confirm Password”, lalu tekan tombol “Next”.



**New Connection Wizard**

**Internet Account Information**  
You will need an account name and password to sign in to your Internet account.

Type an ISP account name and password, then write down this information and store it in a safe place. (If you have forgotten an existing account name or password, contact your ISP.)

User name:

Password:

Confirm password:

Use this account name and password when anyone connects to the Internet from this computer

Make this the default Internet connection

Turn on Internet Connection Firewall for this connection

< Back   Next >   Cancel

- Klik kotak “**Add a shortcut to this connection to my desktop**”, lalu tekan tombol “**Finish**”.

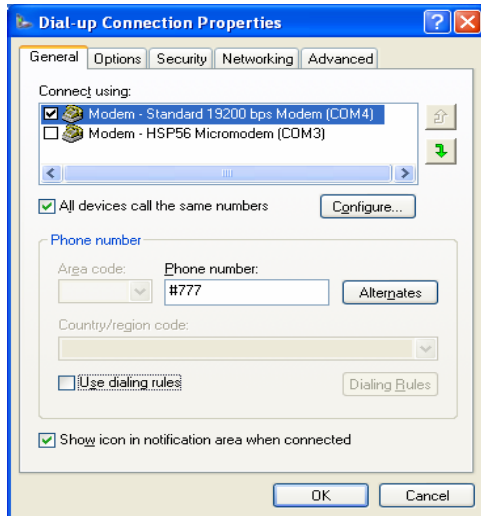


**Keterangan :**

1. Untuk memutuskan sambungan internet, tekan tombol **Disconnect** (END) di Handheld. Jika anda ingin User Name dan Password secara otomatis connect untuk yang kedua kali nya maka cukup berikan tanda **check** pada Checkbox **Save Password**.
2. Masukkan User Name ISP anda dengan : **telkomnet@flexi**, dan password ISP anda dengan : **telkom**

## Pengaturan Konfigurasi

- Start → Setting → Control Panel → Network and Internet Connection → Network Connection. Akan muncul ikon **Telkom Flexi**, lalu gerakan kursor ke ikon tersebut dan klik kanan maka akan keluar pop up dan pilih **Properties**. Lalu klik **Configure....**



- Ganti “Maximum Speed (bps)” dengan “115200”. Lalu tekan tombol “OK”

