

CARA MENGAKTIFKAN INTERNET DENGAN SC-3200 & SC-3210

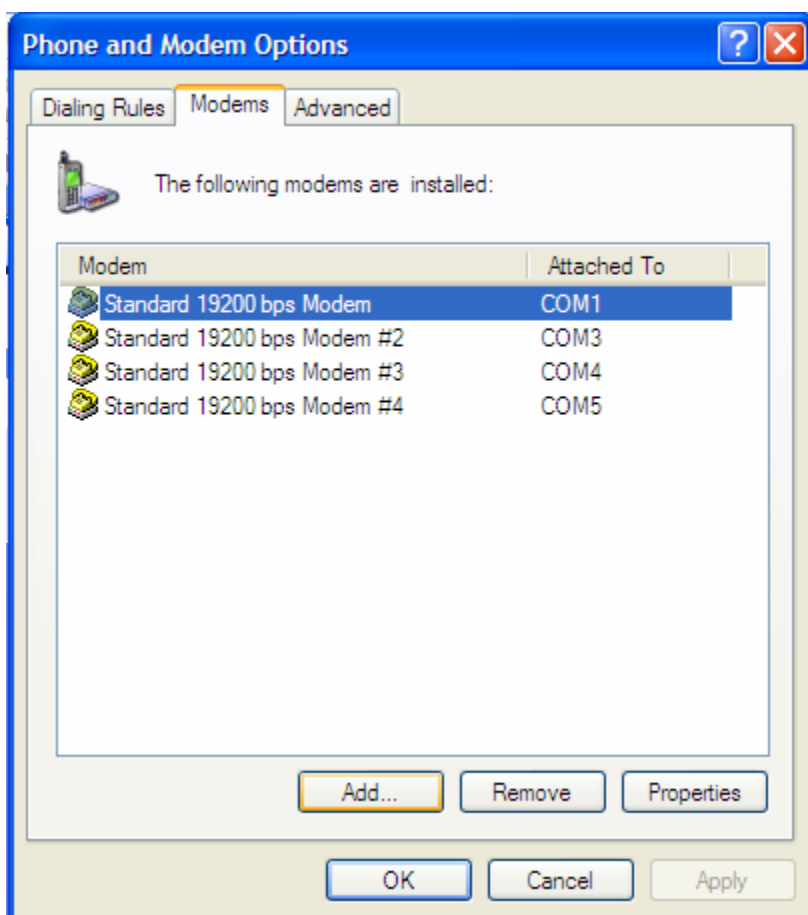
MENGHUBUNGKAN TELEPON DENGAN PC/LAPTOP

1. Setting Modem

Klik “start” dan pilih “control panel”

2. Double Klik “Phone dan Modem Options”

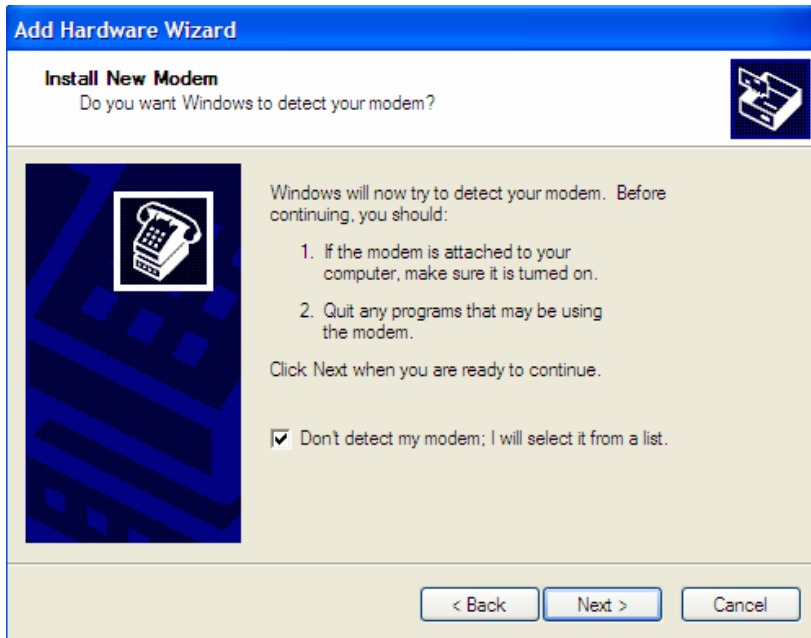
3. Klik “Modems” kemudian klik “Add”



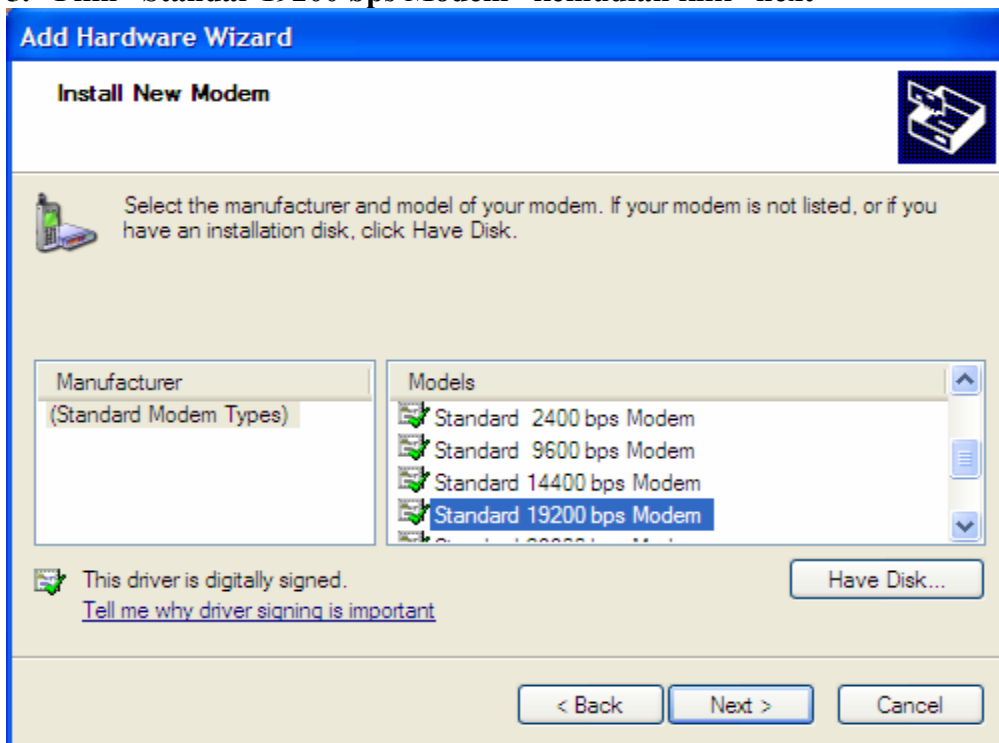


Get the latest Flexi updates, click www.telkomflexi.com !

4. Klik “Don’t Detect My Modem... list” kemudian klik “next”



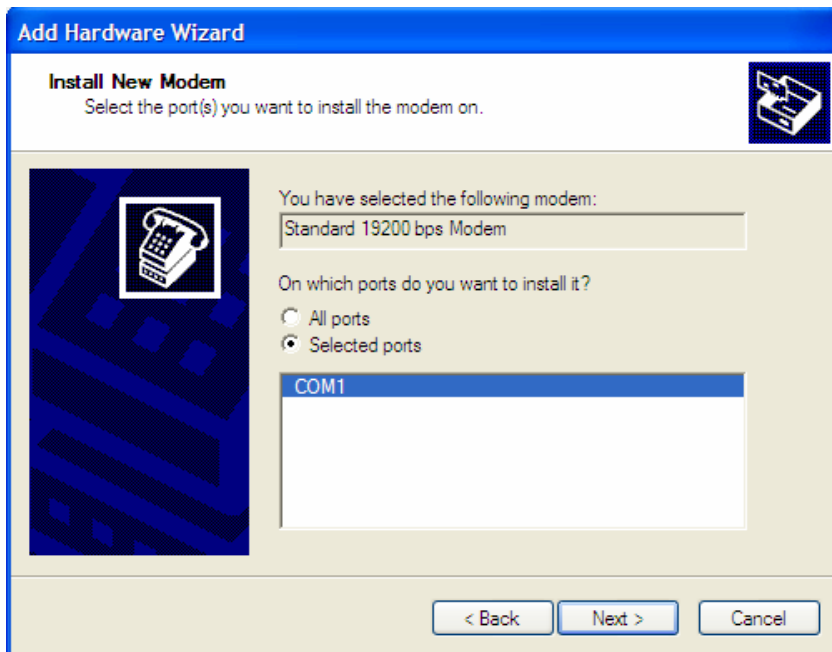
5. Pilih “Standar 19200 bps Modem” kemudian klik “next”



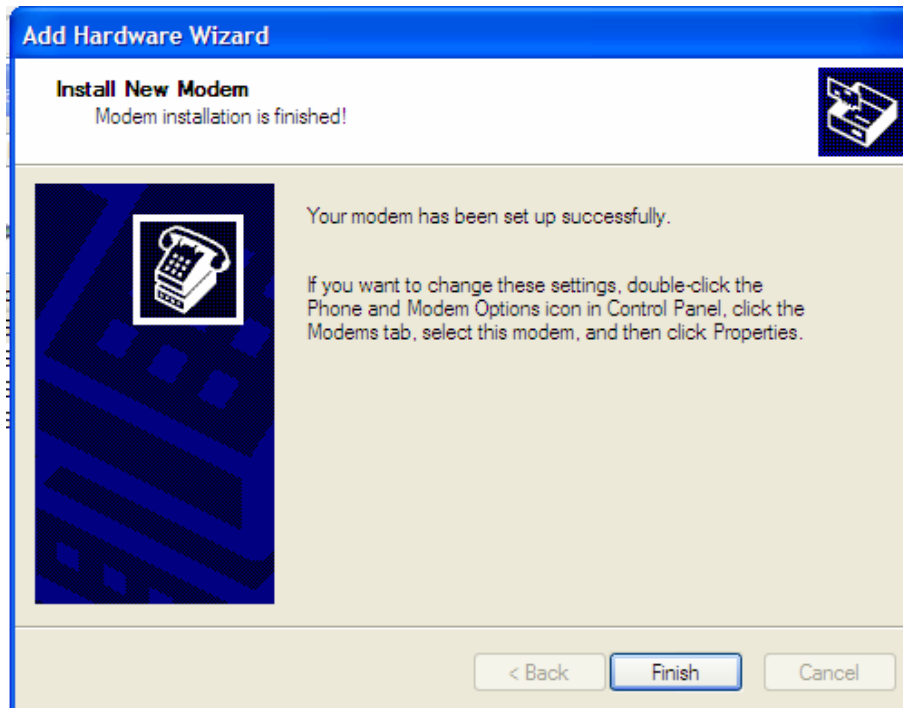


Get the latest Flexi updates, click www.telkomflexi.com !

6. Klik “COM1” jika anda menset modemnya pada COM 1 kemudian klik “next”



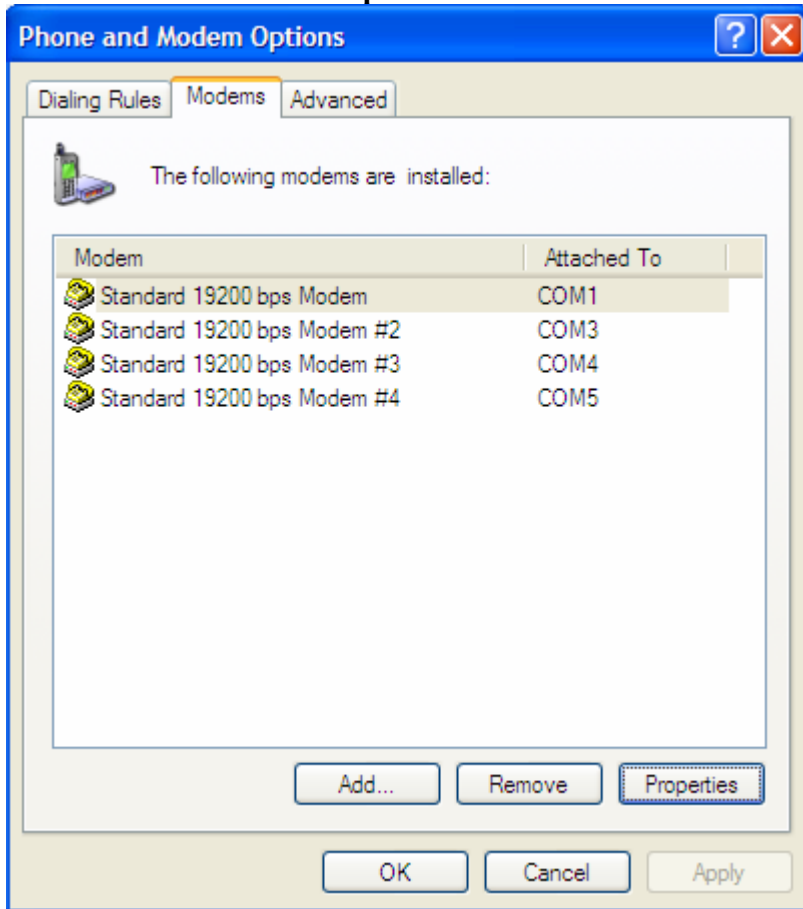
7. Klik “Finish”





Get the latest Flexi updates, click www.telkomflexi.com !

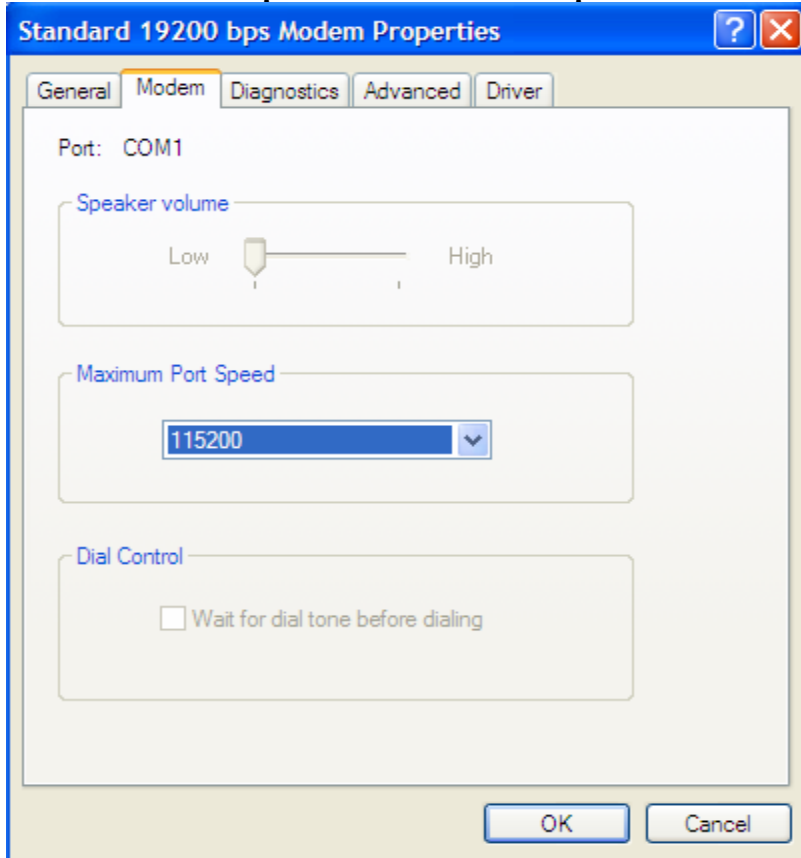
8. Klik “Standar 19200 bps Modem COM 1” kemudian klik “Properties”



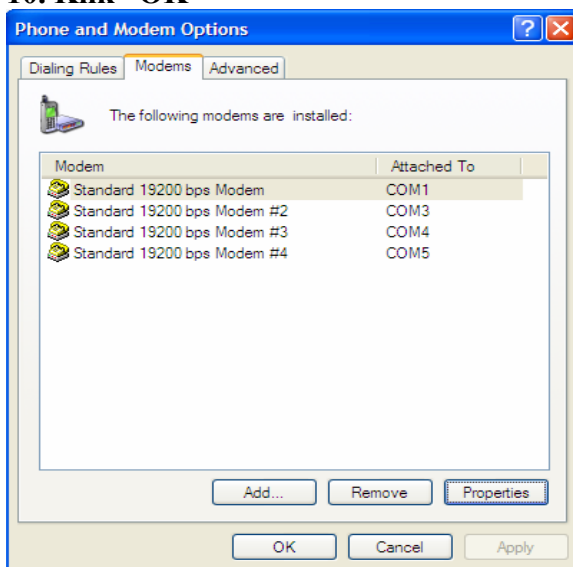


Get the latest Flexi updates, click www.telkomflexi.com !

9. Pilih “115200” pada Maximum Port Speed list kemudian klik “OK”



10. Klik “OK”

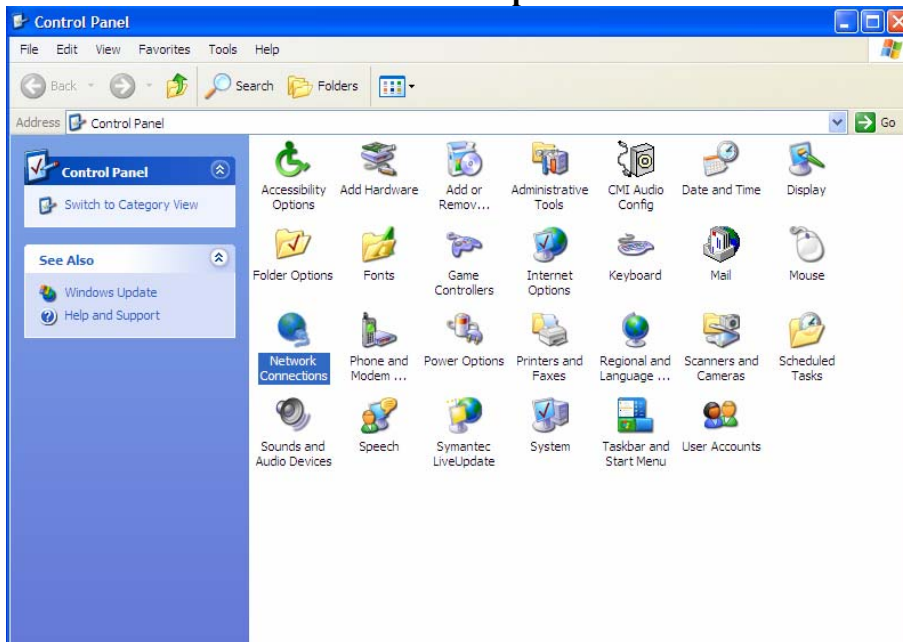




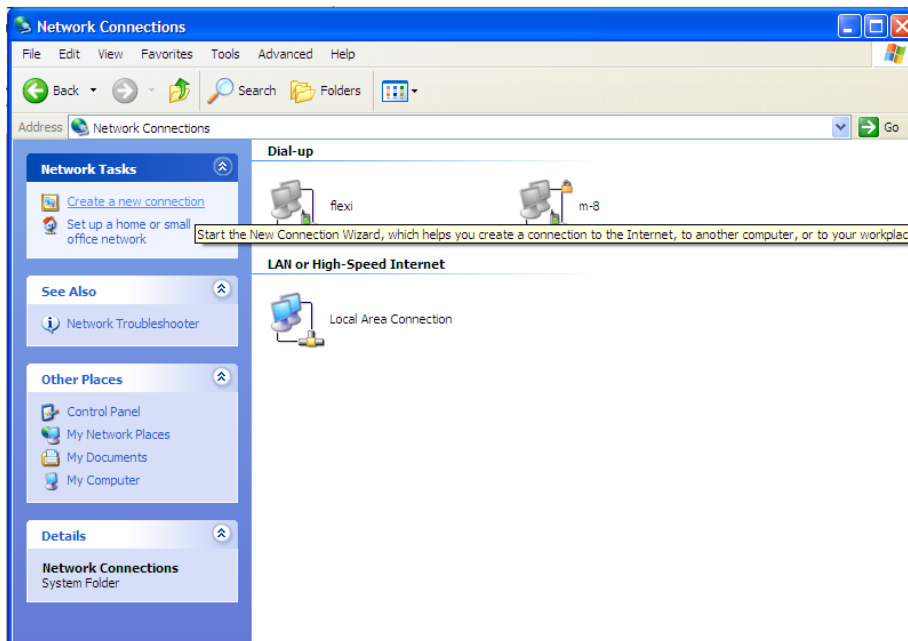
Get the latest Flexi updates, click www.telkomflexi.com !

MEMBUAT KONEKSI BARU INTERNET

1. Double klik “Network and Dial Up Connection”.



2. Klik “Create New Connection”



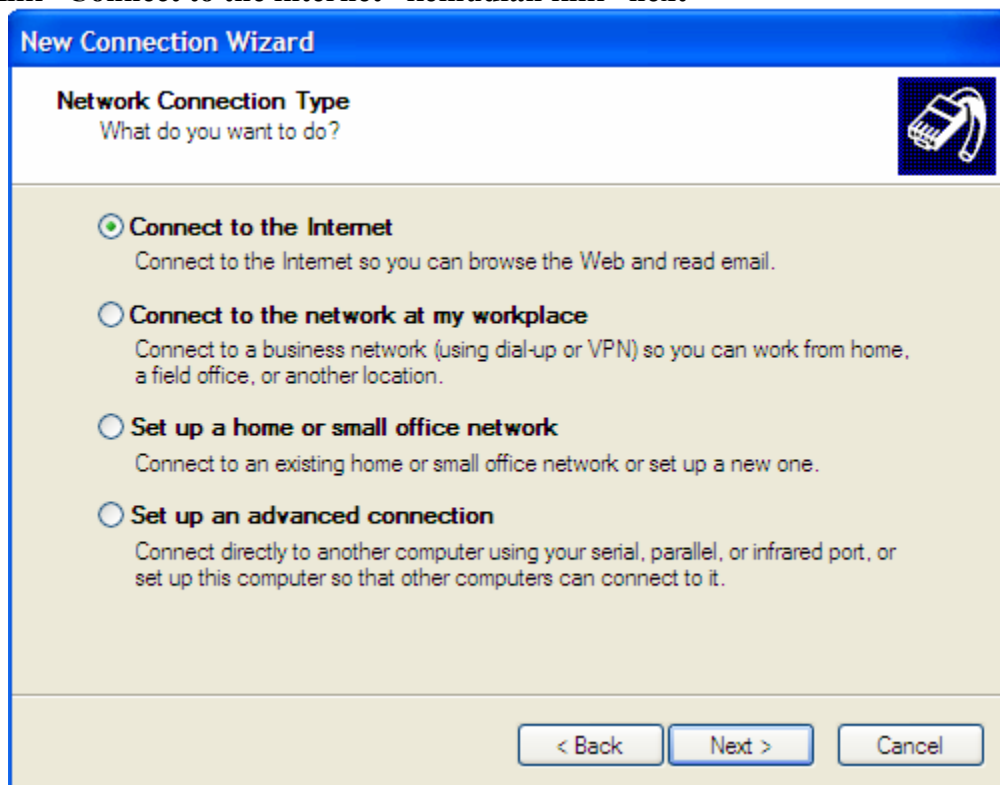
3. Klik “next”



Get the latest Flexi updates, click www.telkomflexi.com !



4. Klik “Connect to the internet” kemudian klik “next”





Get the latest Flexi updates, click www.telkomflexi.com !

5. Pilih “Set up my connection manually” kemudian klik “next”

New Connection Wizard

Getting Ready
The wizard is preparing to set up your Internet connection.

How do you want to connect to the Internet?

- Choose from a list of Internet service providers (ISPs)
- Set up my connection manually**
For a dial-up connection, you will need your account name, password, and a phone number for your ISP. For a broadband account, you won't need a phone number.
- Use the CD I got from an ISP

< Back Next > Cancel

6. Pilih “connect using a dial-up modem” kemudian klik “next”

New Connection Wizard

Internet Connection
How do you want to connect to the Internet?

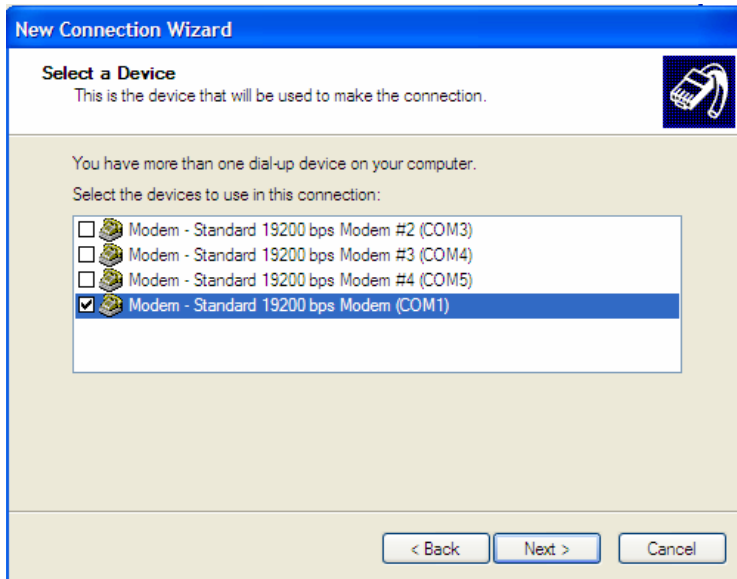
- Connect using a dial-up modem**
This type of connection uses a modem and a regular or ISDN phone line.
- Connect using a broadband connection that requires a user name and password**
This is a high-speed connection using either a DSL or cable modem. Your ISP may refer to this type of connection as PPPoE.
- Connect using a broadband connection that is always on**
This is a high-speed connection using either a cable modem, DSL or LAN connection. It is always active, and doesn't require you to sign in.

< Back Next > Cancel

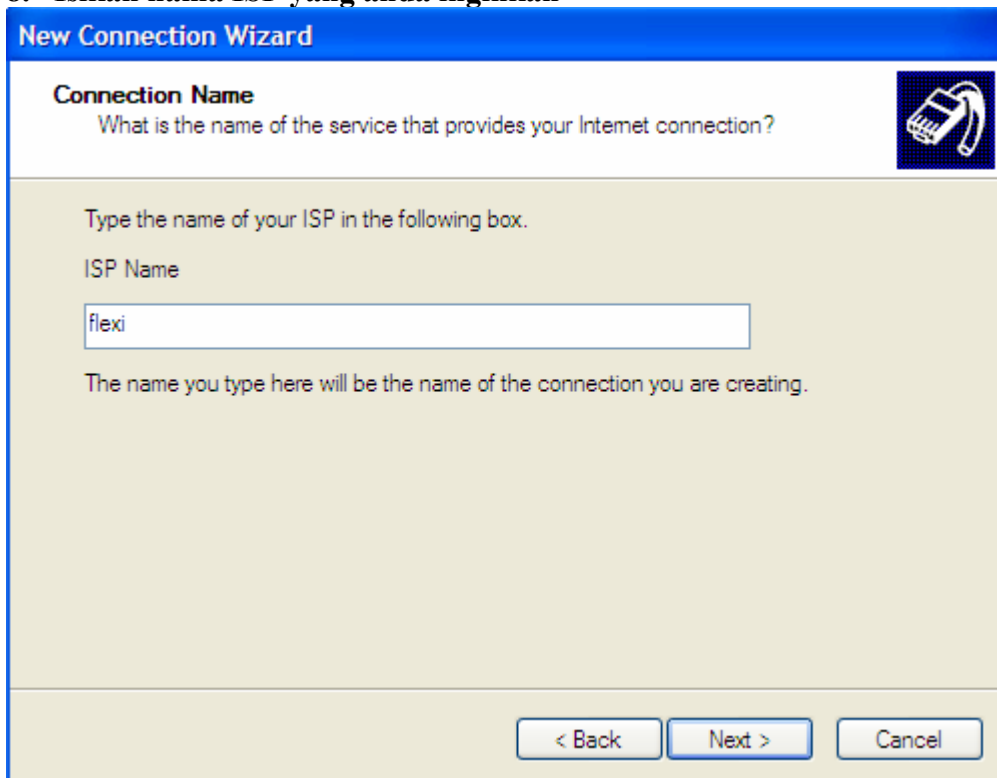


Get the latest Flexi updates, click www.telkomflexi.com !

7. Pilih Modem Standar 19200 COM 1 kemudian klik “next”



8. Isikan nama ISP yang anda inginkan





Get the latest Flexi updates, click www.telkomflexi.com !

9. Masukkan nomor ISP untuk sambungan ke flexi. Nomor tersebut adalah #777

New Connection Wizard

Phone Number to Dial
What is your ISP's phone number?

Type the phone number below.

Phone number:
#777

You might need to include a "1" or the area code, or both. If you are not sure you need the extra numbers, dial the phone number on your telephone. If you hear a modem sound, the number dialed is correct.

< Back Next > Cancel

10. Masukkan user name dan pasword dan klik "next"

User name flexi : telkomnet@flexi

Password : telkom

New Connection Wizard

Internet Account Information
You will need an account name and password to sign in to your Internet account.

Type an ISP account name and password, then write down this information and store it in a safe place. (If you have forgotten an existing account name or password, contact your ISP.)

User name: telkomnet@flexi

Password: ●●●●●●

Confirm password: ●●●●●●

Use this account name and password when anyone connects to the Internet from this computer

Make this the default Internet connection

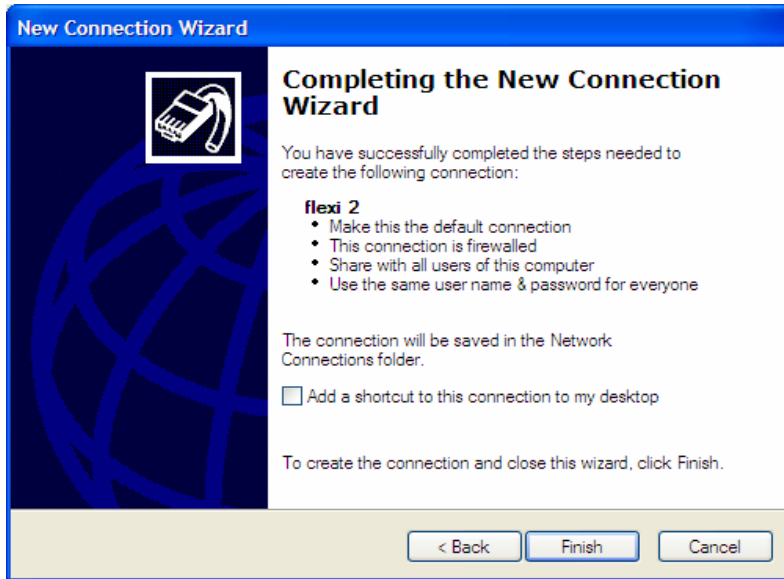
Turn on Internet Connection Firewall for this connection

< Back Next > Cancel



Get the latest Flexi updates, click www.telkomflexi.com !

11. Klik finish.



12. Setting pada FWT.

1. Menu 0 pilih 3, Force: data/fax off
2. Menu 0 pilih 4,
Pilih 2 DS baud: 115.200
Pilih 3 Diag baud: 115.200