

# PRODUCT KNOWLEDGE TRAINING

NETAC A840 (USB)

Presented for TELKOMFlexi

By

PT MLW Telecom



Presenter



TELKOMFlexi

Authorized CDMA Distributor and Vendor Terminal  
Flexi(Telkom)

PT MLW Telecom, Jakarta



- Introduction of the presenters
- Introduction of PT MLW Telecom
- CDMA 2000 1x Data Card
  - Netac MobileWave A840
- Q & A

# Introduction of PT MLW Telecom

PT MLW Telecom is a company as the following:

- A division of PT Masindo Lestari Wibawa, Founded on 1989.
- Founded in the year 2003, with the existing of CDMA 2000 1x Network in Indonesia
- A solutions provider and sole distributors of CDMA 2000 products, Growell Co. Ltd, Netac Ltd, and Axesstell Inc.
- A partner of Internet Service Provider, AT&T Sistelindo, CBN, Jalawave, Central Online, Radnet, IPNET, Mitranet, Biznet, CentrinOnline, and Indonet
- An Authorized Distributor and vendor terminal CDMA Operator, Flexi(Telkom)

# CDMA Operator Partners in Indonesia

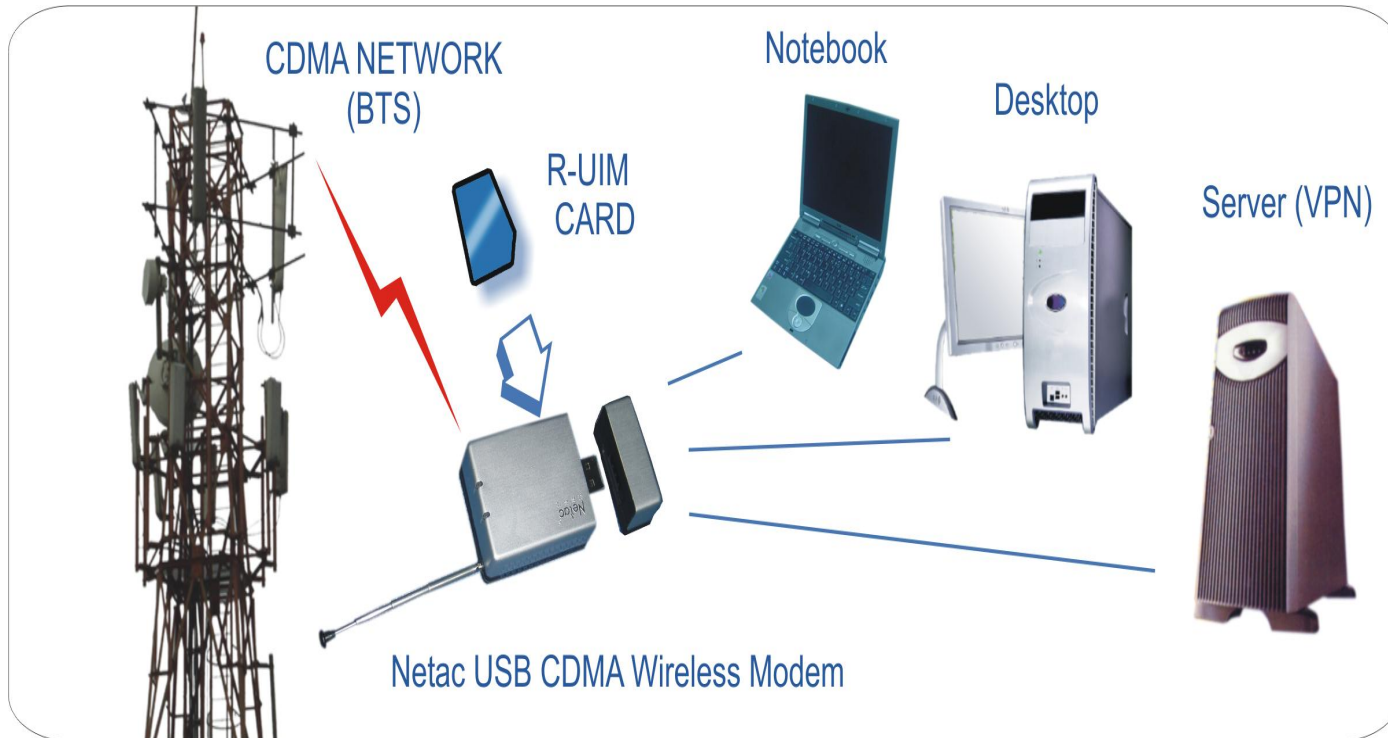


## Business Partners



internet@your.fingertips





## Netac A840 Network Architecture



**NETAC MOBILE WAVE  
USB CDMA WIRELESS  
A840U**

## **NETAC A840 PRODUCT SPECIFICATIONS**

CDMA 200 1x with RUIM, 800 Mhz Frequency Bands

Chipset : Qualcomm MSM6050

Data Speeds : Up to 153,6 Kbps (Averaging 60 to 100 Kbps)

Additional Connectivity Support : Voice Call and SMS

Accessories(included) :

- Hands free Earphone(for Voice)
- CD Installation
- User's Guide
- USB Extension cable

Operating System Support : Windows 95/98/2000(SERVER)/ME/XP/LINUX

Dimensions: 68 mm x 40 mm x 19,5 mm

Weight : 50 g (not including flash drive)

USB Host Port : USB 2.0/1.1/1.0

Power Supply : USB (4,5 V ~ 5,5 V)

Operation Temperature : -30 C ~ +60 C

Storage Temperature : -40 C ~ +80 C

Relative Humidity under Operating : 10% ~ 90%

Relative Humidity under Storage : 5% ~95%

Antena : Retractable +360 o

Colors : Available in silver or blue color

Flash Drive Speed (Optional)

Read USB 2.0 : 9,5 MB/s

USB 1.1/1.0 : 1,2 MB/s

Write USB 2.0 : 8,5 MB/s

USB 1.1/1.0 : 1,1 MB/s

Flash Disk Storage(Optional)

16/32/64/128/256/512 Mbytes

## **NETAC A840 PRODUCT FEATURES**

- *Mobile Wireless Internet* can be used anywhere, anytime (\*)
  - Wireless Internet Access with high speed until 153,6 Kbps (\*)
  - Faster than cable modem and Wi-Fi (64 Kbps), and PSTN modem (56 Kbps)
  - Using the technology of R-UIM (Removable User Identity Module)
  - No more ESN injection and no risk of cloning
  - Support on all Microsoft Windows version Operating Systems.
  - Instantaneous Voice calls and SMS (group SMS) through Personal Computer and Notebook, with unlimited phonebook on the hard drive.
  - Compatible Operator : Flexi (800 MHz)
- This product has been certificated by CDG (CDMA Development Group) by Qualcomm
- USB disk storage optional for A840U

(\*) Depending on operator network

## NETAC SOFTWARE INSTALLATION AND SETTING

### **Important !**

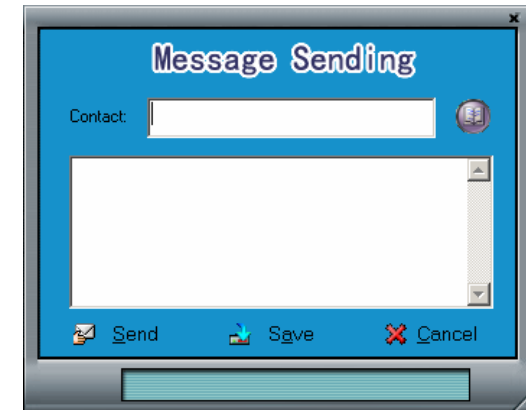
Do not insert Netac USB CDMA Wireless Modem when start the installation.  
Make sure that PIN in your R-UIM is in the condition of disable.

1. Insert the installation CD Netac Mobile Wave Software, wait the process of installation.
2. If the auto start doesn't start , double click from the directory "Netac Mobile Wave" Installation CD.
3. Choose "Mobile Wave Wireless Modem Application" and click Next.
4. After the installation, the icon "Netac Wireless Data Application Center" will appear on the desktop.
5. Insert the Netac USB CDMA Wireless Modem to the computer.
6. Continue the process of installation driver "Mobile Wave Wireless Modem Application" until finish.
7. Then Restart your computer.

### I. Internet Setting with Netac Mobile Wave Software

1. *Double Click* the icon "Netac Wireless Data Application Center", until the Netac Application windows appear.
2. Click the **Configure** button on the Netac Menu.
3. Choose "Connection Parameter"
4. Click "New" on "Connection Parameter".
5. Fill in the *Service name* : Netac CDMA, *Access Number* : #777
6. For CDMA Operator TelkomFlexi, User Name : **telkomnet@flexi**, **Password** : **telkom**, click OK (\*\*)
7. Click "Setting" to activate.
8. *Uncheck* "Connect the Internet when Program Starting", click OK
9. Click on Netac Mobile Wave.

# Netac MobileWave User Interface



High speed data access  
up to 153.6 kbps max (\*)

Voice connection  
Incoming/outgoing

SMS  
Short Messages Service

(\*) depending on the operator networks

**For More Information, please feel free to contact us.**

# Question & Answers

Thank you for the time and  
attention