

# PRODUCT KNOWLEDGE TRAINING

## GROWELL GW-1031-C (PCMCIA)

Presented for TELKOMFlexi

By

PT MLW Telecom



Presenter



Authorized CDMA Distributor and Vendor Terminal  
Flexi(Telkom)  
PT MLW Telecom, Jakarta



- Introduction of the presenters
- Introduction of PT MLW Telecom
- CDMA 2000 1x Data Card
  - Growell Freewing SpeedUp GW-1031-C
- Q & A

# Introduction of PT MLW Telecom

PT MLW Telecom is a company as the following:

- A division of PT Masindo Lestari Wibawa, Founded on 1989.
- Founded in the year 2003, with the existing of CDMA 2000 1x Network in Indonesia
- A solutions provider and sole distributors of CDMA 2000 products, Growell Co. Ltd, Netac Ltd, and Axesstell Inc.
- An Authorized Distributor and vendor terminal CDMA Operator, Flexi(Telkom)

# CDMA Operator Partners in Indonesia



## Business Partners



internet@your.fingertips



## CDMA 2000 1x Data Card



**GROWELL FREEWING SPEEDUP  
PCMCIA CDMA WIRELESS  
GW-1031C**



## Growell GW-1031-C Network Architecture

## GROWELL GW-1031C Product Specification

### CDMA

CDMA2000 1xRTT protocol with RUIIM

CDMA 800MHz Frequency Bands

MSM 5100 series

### Qualcomm Chipset

### Data Speeds

Up to 153.6 Kbps (averaging 60 to 100 Kbps) (\*)

### Additional Connectivity Support

Voice call and SMS

### Mechanical

PCMCIA Type II Card (Extended)

Size - W: 110.0mm X H: 54.0mm X D: 5.0(17.2)mm

### Accessories included

Hands-free Earphone (for Voice)

Carrying Case

CD driver and installation

User's Guide

### Operating System Support

Windows 95/98/2000/ME/XP/Tablet PC/LINUX

### Others

(1) System Requirements for Laptops:

- Card Slots: 1 Type II PCMCIA slot
- Communication Ports: 1 Available
- Disk Drive: CD-ROM
- I/O Resources: 1 IRQ, 32 bytes I/O space
- Memory: 32MB
- Disk Space: 7MB

(2) Internal Antenna (improves reliability & performance)

(3) Supports R-UIM

(4) Available in Gold and silver colors

(\*) Depending on the operator networks

## Growell Features

- Mobile Wireless Internet can be used anywhere, anytime (\*)
- Wireless Internet Access with high speed until 153,6 Kbps (\*)
- Using the technology of R-UIM (Removable User Identity Module)
- No more ESN injection and no risk of cloning
- Support to all kinds of notebooks that have PCMCIA slot type II and all computers with windows Operating System
- Instantaneous Voice calls and SMS through notebook with limitless Phonebook and Short Message Service (SMS) inbox database
- Compatible Operator: Flexi (800 MHz)
- Support to PC (Personal Computer) with PCMCIA Converter (PCI to PCMCIA) Card
- This product has been certificated by CDG (CDMA Development Group) by Qualcomm

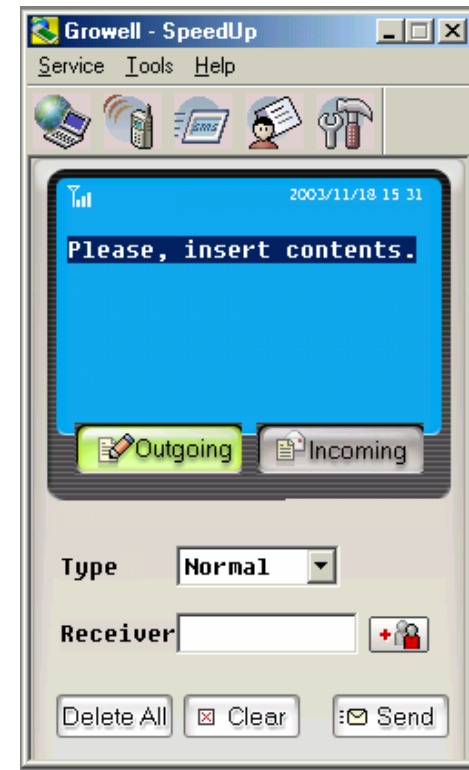
# Growell User Interface



High speed data access  
up to 153.6 kbps max (\*)



Voice connection  
Incoming/outgoing



SMS  
Short Messages Service



(\*) depending on the operator networks



## Procedure connection of Growell SpeedUp software

### Important!

- Do not insert the SpeedUp Card to PCMCIA slot when start the installation.
  - Make sure that PIN in your R-UIM is in the condition of disable.
1. Insert installation CD Growell Freewing Speedup, wait the process of installation. If the auto start doesn't start, double click the "Setup.exe" from the CD-Rom drive
  2. Click Next button until it appears windows of installation process (4 x Next)
  3. Insert Growell Freewing Speedup in the PCMCIA slot and wait the installation driver (Don't click Next before it appears Found New Hardware )
  4. Continue the process of installation driver "IBRIDGE IB 3000 Modem"
  5. Then click Finish
  6. Restart your computer
  7. Make sure the LED on the PCMCIA card blinking prior double Clicking Growell speedup Icon on the desktop
  8. On the Growell Speedup User Interface, click Tools>setting>Connection Setting> change User ID and Password.
  9. For connecting to Telkom Flexi, type user ID :**telkomnet@flexi** and **password : telkom**

**For More Information, please feel free to contact us.**

# Question & Answers

Thank you for the time and  
attention